

How to install the A3 Pro Camera

Technical FAQ



USV | Nov 2023

Make your work more efficient

Prerequisites:

Hardware: Camera, A3 Pro

Steps:

1. Take out the back shell of it and take off the screws on the back.

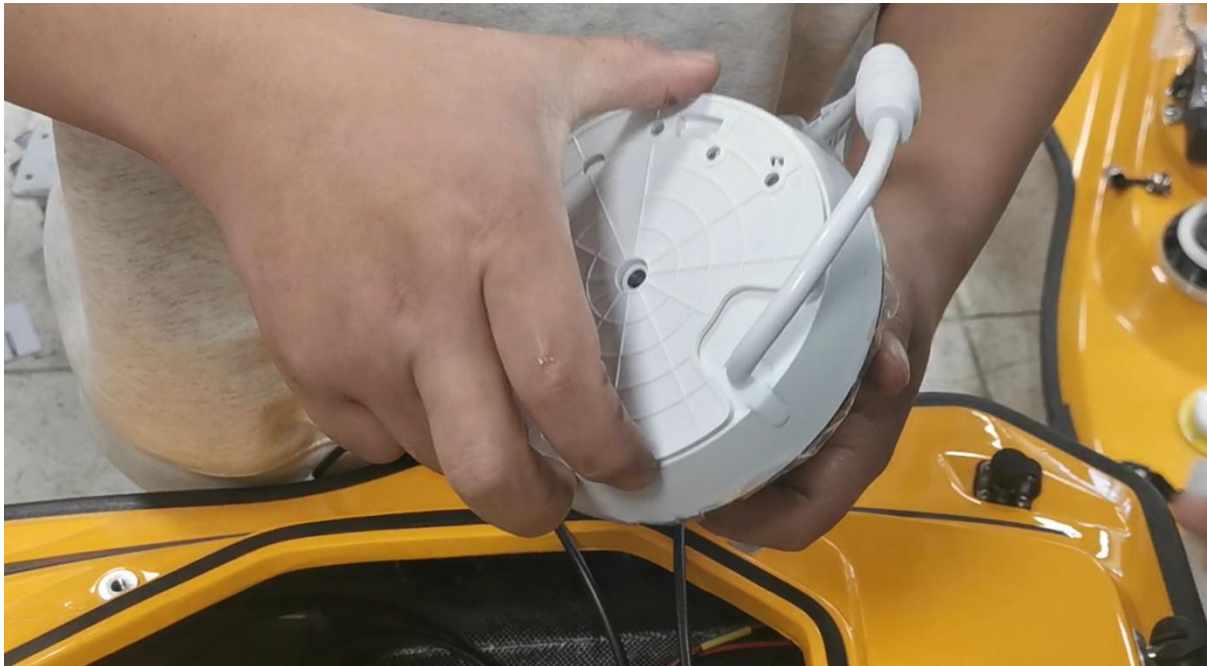


Figure 1



Figure 2

2. Then put the cable through the hole, put the camera firmly.



Figure 3



Figure 4

3.Put the screws below the camera:



Figure 5



Figure 6

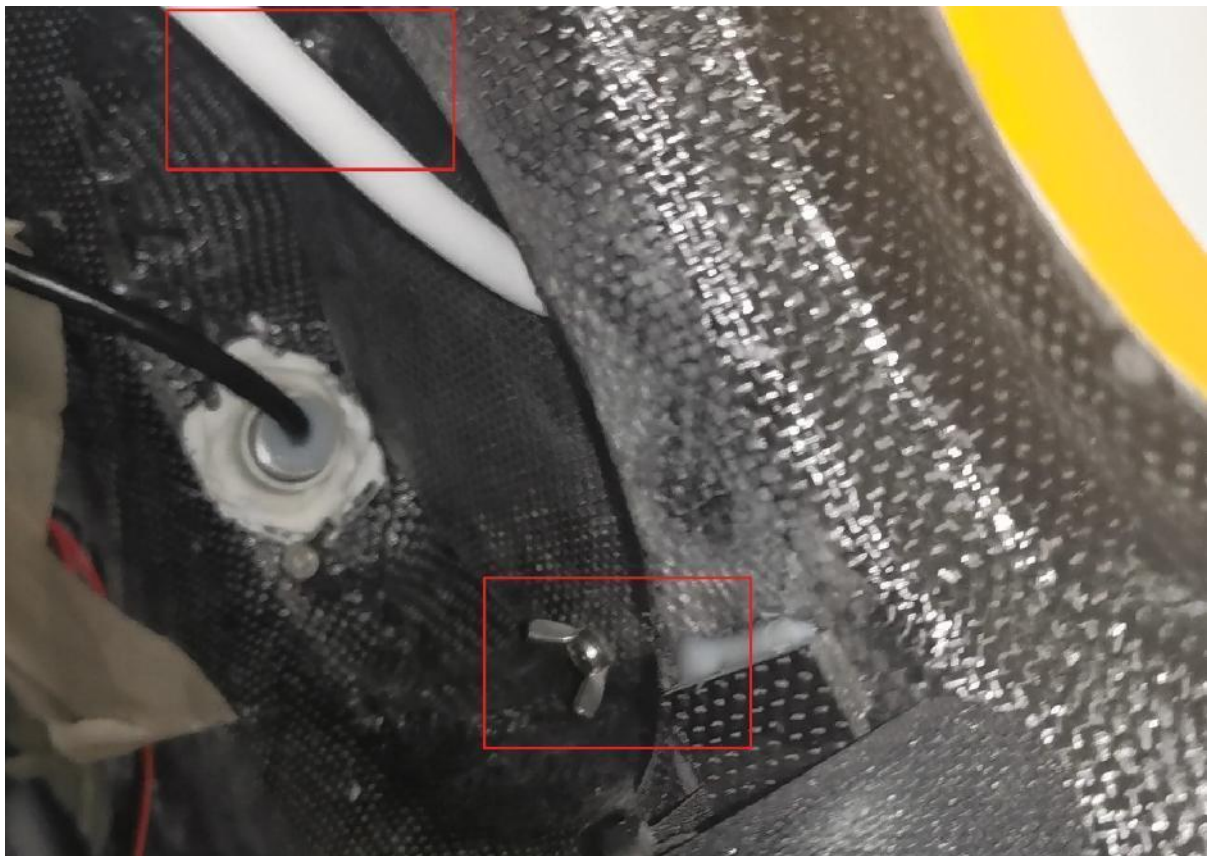


Figure 7

CHC Navigation

Shanghai Huace Navigation Technology Ltd.

CHCNAV | Smart Navigation & Geo-Spatial Technology
Park,

577 Songying Road, 201703, Shanghai, China

Tel: +86 21 542 60 273 | Fax: +86 21 649 50 963

Email: sales@chcnav.com | support@chcnav.com

Skype: chcnav_support

Website: www.chcnav.com